



# Neolec Capacitive Touch Control Board Selection Guide

**Neolec International Inc.**

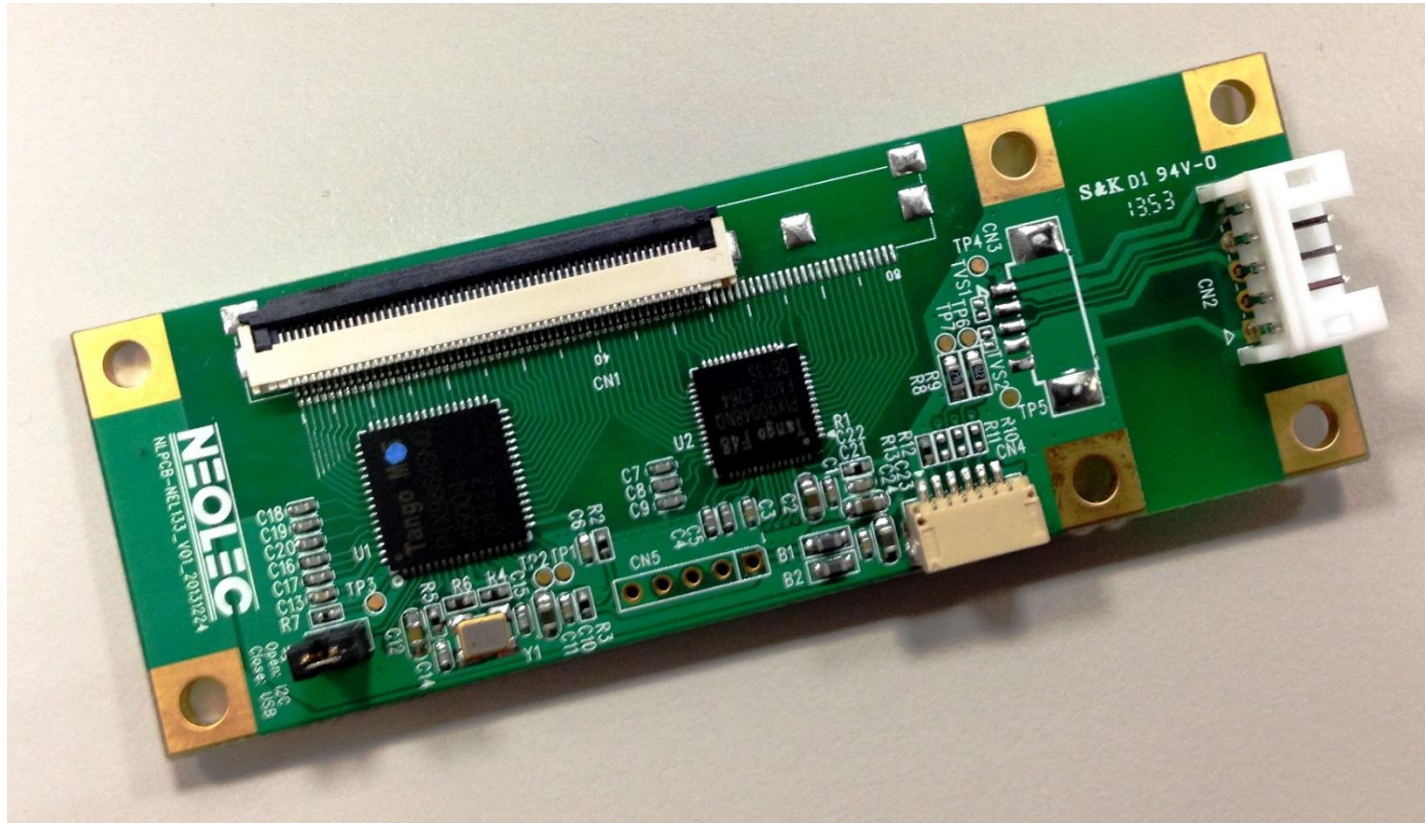
# Available Control Boards Overview

Solution	X Connector	Y Connector	X Ch.	Y Ch.	USB	I2C	RS232	5 Fingers	10 Fingers	Dimension (mm)
NEL070	54		54		✓	✓	✗	✓	✗	80 x 28 x 8
NEL101	64		64		✓	✓	✗	✓	✗	65 x 28 x 8
NEL133	80		80		✓	✓	✗	✓	✗	65 x 28 x 8
NEL150	54	42	54	42	✓	✓	✓	✓	✓	125 x 28 x 8
NEL270B	80	56	74	50	✓	✓	✓	✓	✓	140 x 28 x 8
NEL320	80	56	80	56	✓	✓	✓	✓	✓	140 x 28 x 8
NEL240A	61 x 3		Up to 168		✓	✓	✓	✓	✓	135 x 45 x 5.1
LEN150	60	40	48	37	✓	✓	✗	✓	✓	53.51 x 42.3 x 8.5
LEN150B	60	40	48	37	✓	✓	✗	✓	✓	53.51 x 42.3 x 8.5
LEN159	60	40	59	25	✓	✓	✗	✓	✓	53.51 x 42.3 x 8.5
LEN185	80	54	80	54	✓	✓	✗	✓	✓	90 x 44.6 x 8.5

**Note :** 1. X/Y Ch. including dummy trace .  
 2. 10-fingers depends on Sensor resistance, channel number, cover lens thickness and other parameters

# WinXP, Win7, Android Control Board

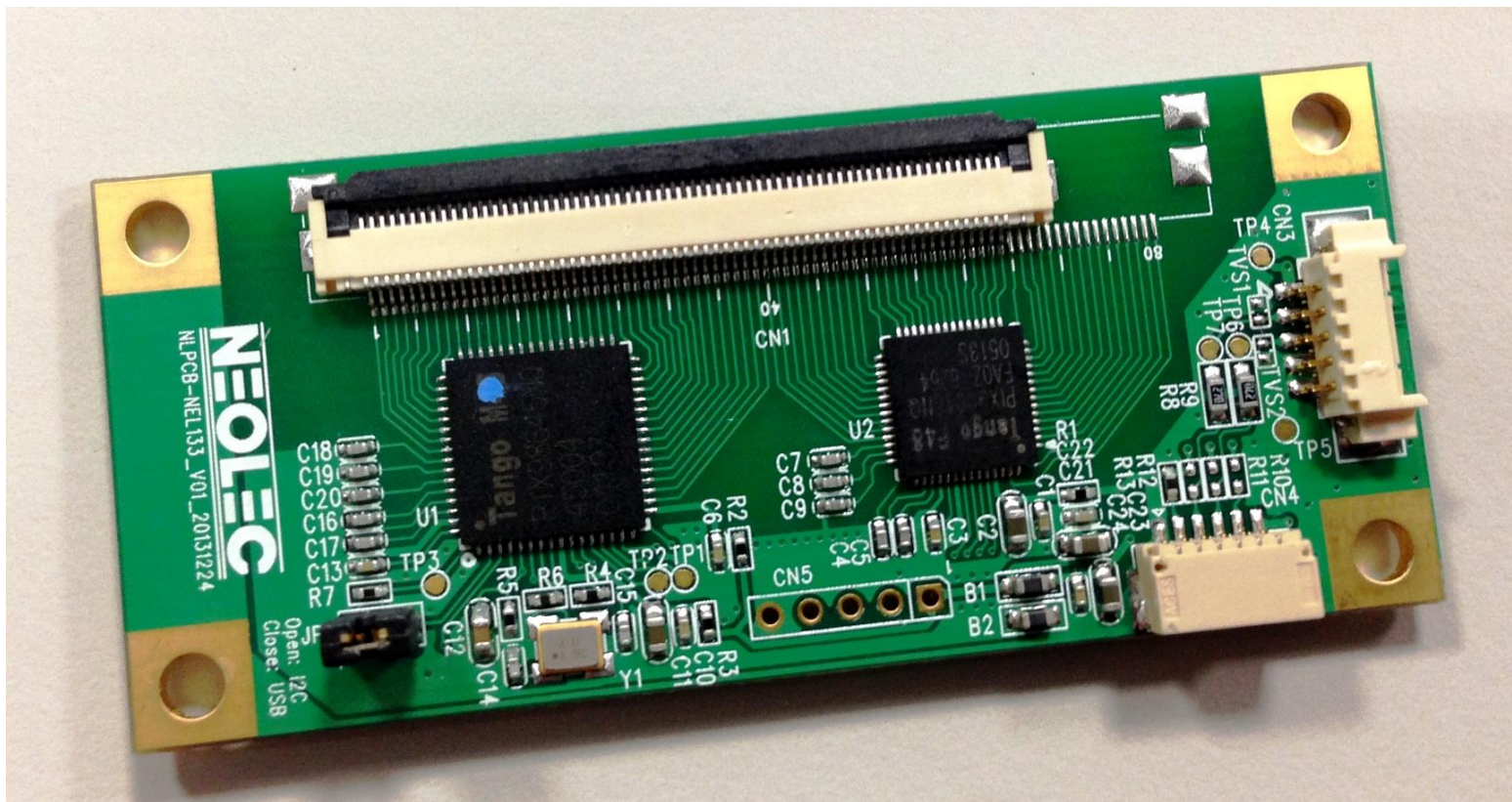
NLPCA-NEL070-5xx for 7" ~ 8" TPM( USB, I<sup>2</sup>C I/F )



Dimension : 80 x 28mm

# WinXP, Win7, Android Control Board

NLPCA-NEL101-5xx for 7" ~ 10.1" TPM( USB, I<sup>2</sup>C I/F )

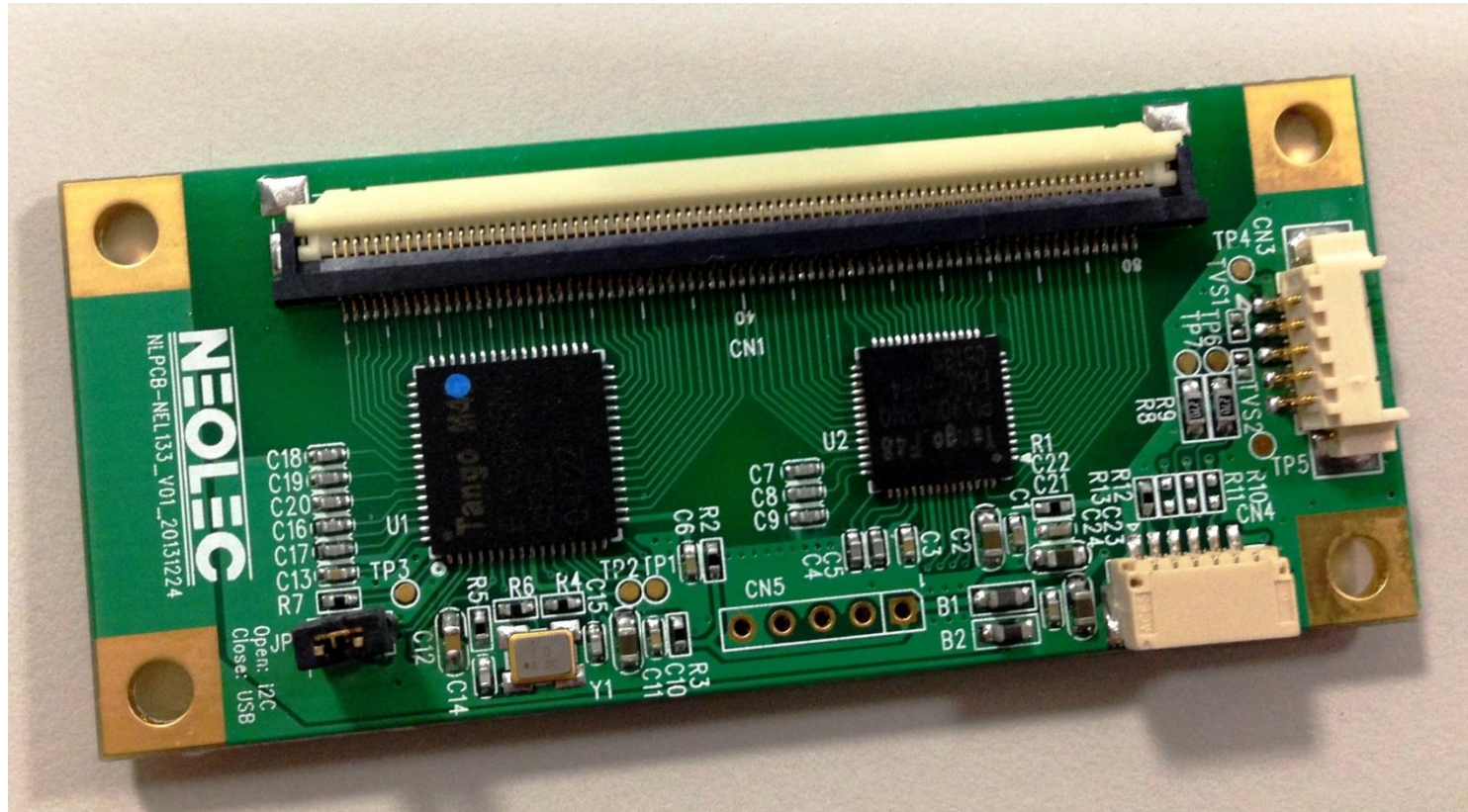


Dimension : 65 x 28mm



# WinXP, Win7, Android Control Board

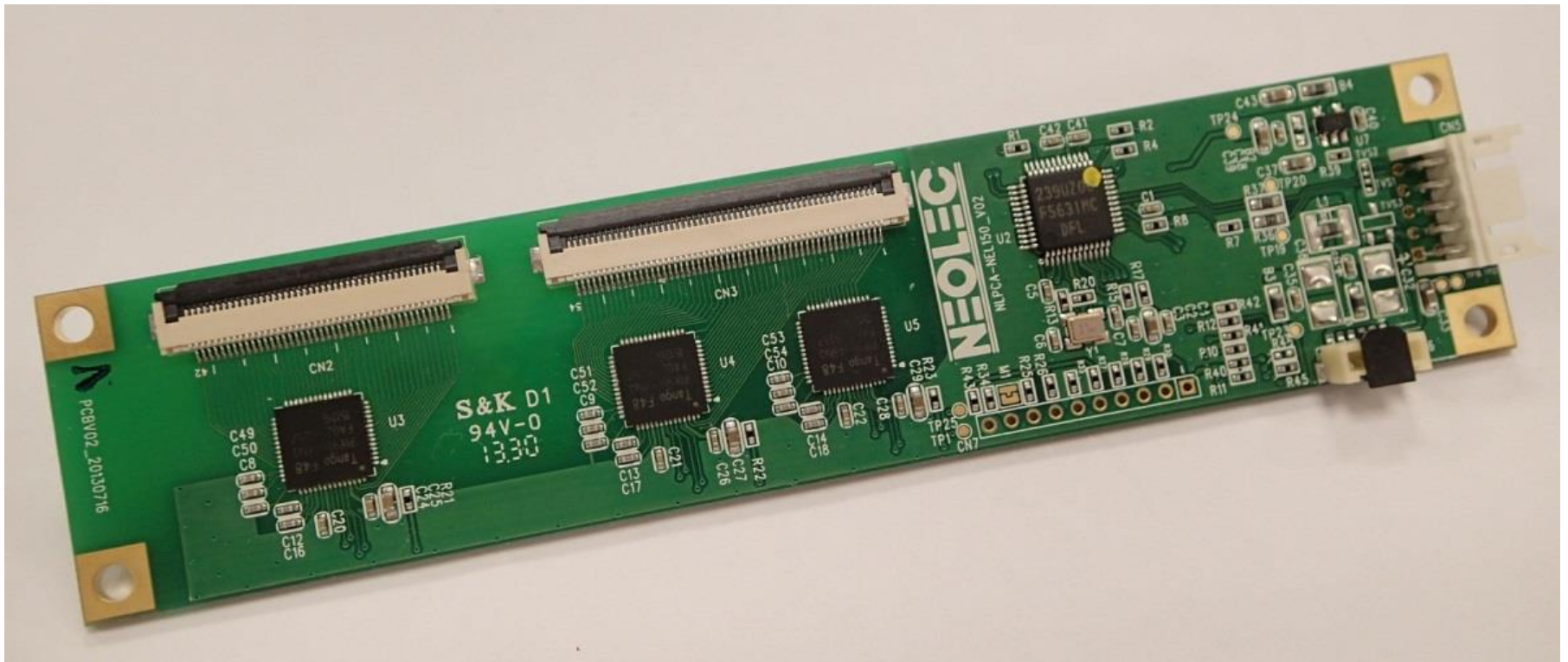
NLPCA-NEL133-5xx for 7" ~ 13.3" TPM( USB, I<sup>2</sup>C I/F )



Dimension : 65 x 28mm

# WinXP, Win7, Android Control Board

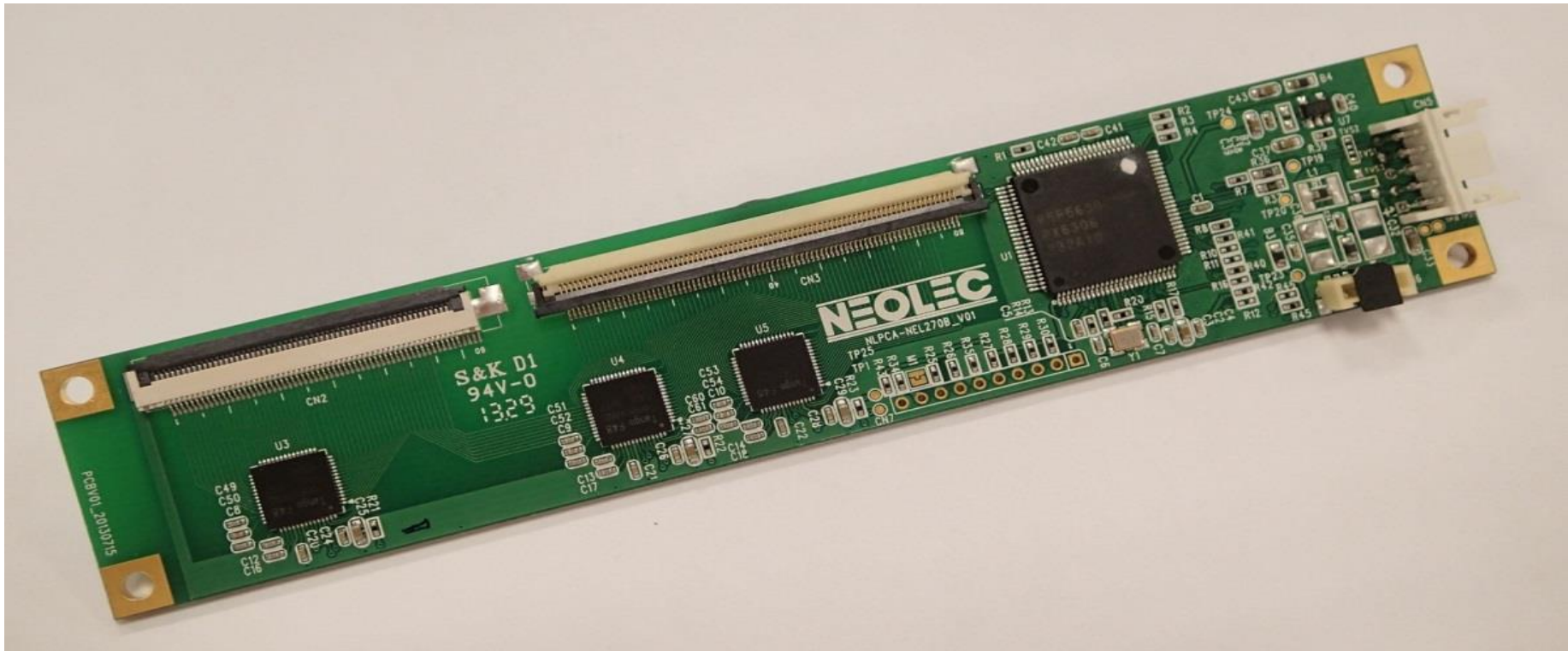
NLPCA-NEL150-xxx for 9" ~ 15" TPM( USB, I<sup>2</sup>C, RS232 I/F )



Dimension : 125 x 28mm

# WinXP, Win7,Android Control Board

NLPCA-NEL270B-xxx for 17" ~ 23.6" TPM ( USB, I<sup>2</sup>C, RS232 I/F )

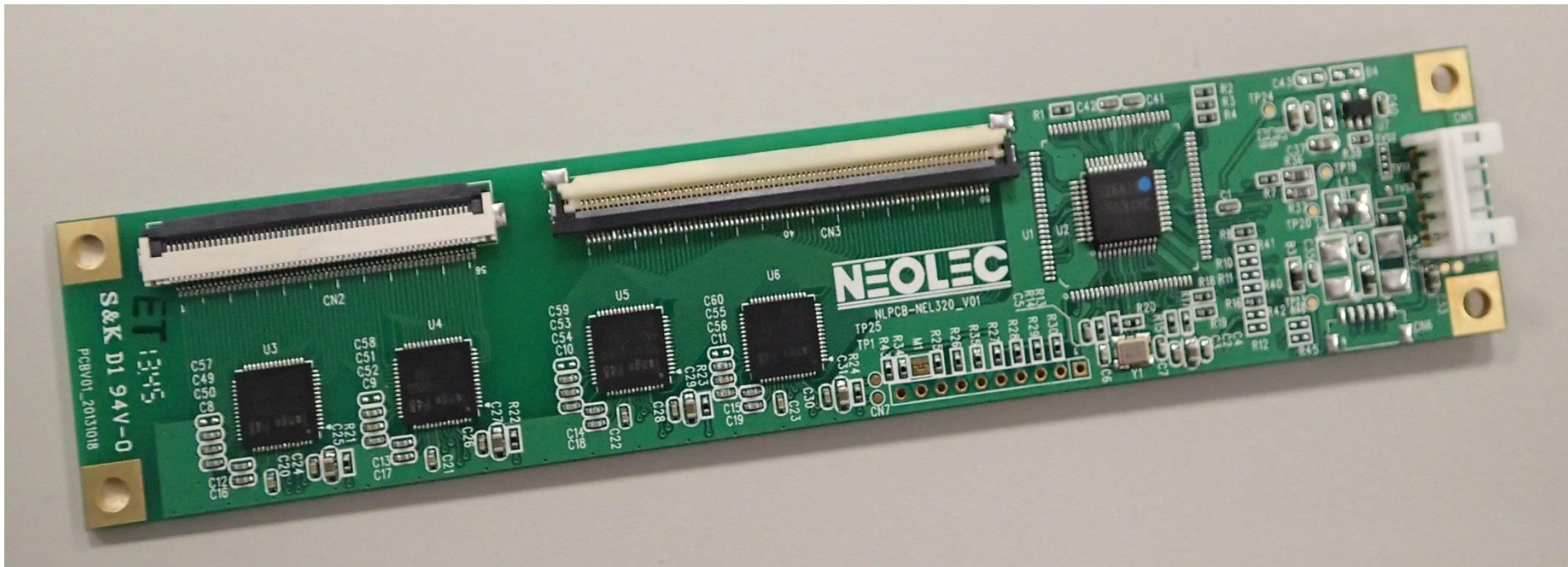


Dimension : 134 x 28mm



# WinXP, Win7, Android Control Board

NLPCA-NEL320-xxx for 17" ~ 27" TPM ( USB, I<sup>2</sup>C, RS232 I/F )

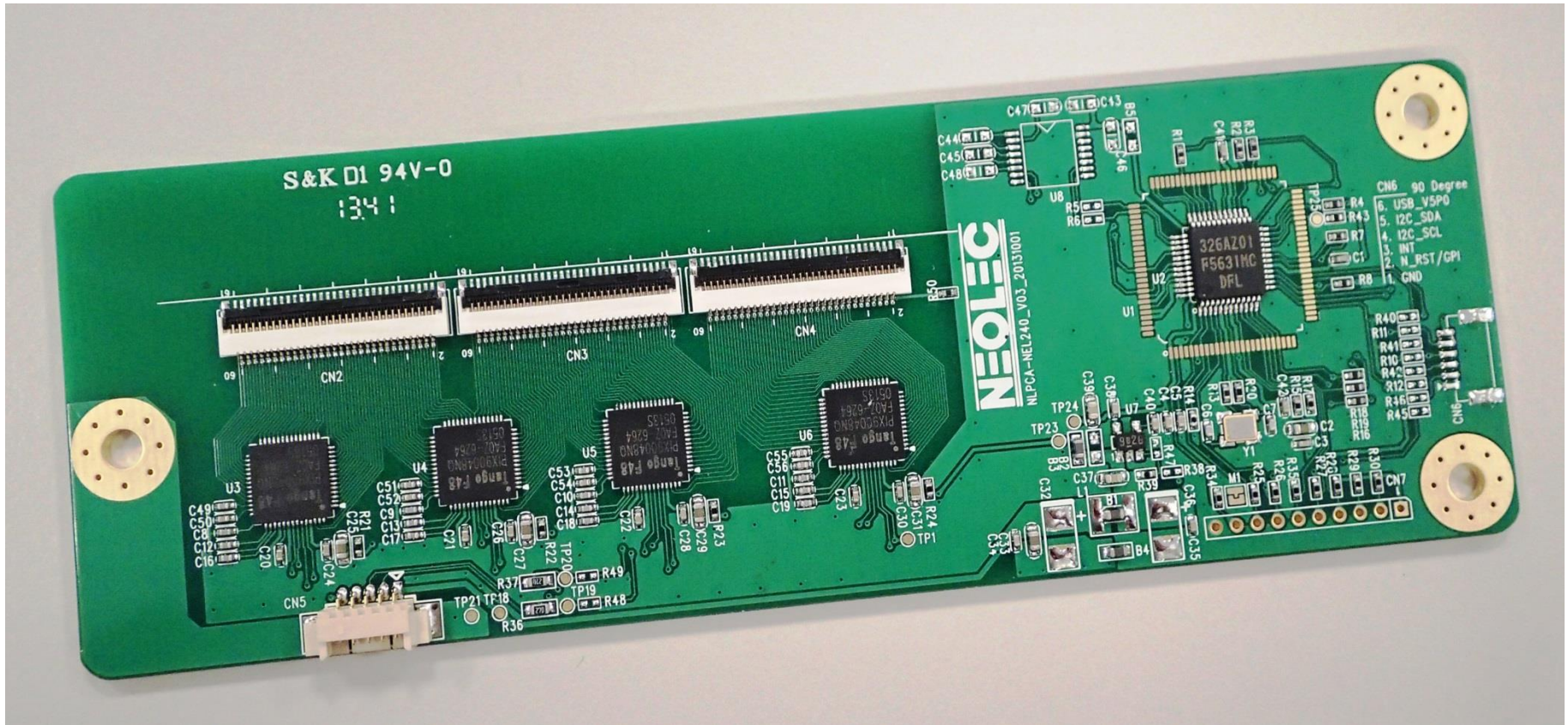


Dimension : 134 x 28mm



# WinXP, Win7, Android Control Board

NLPCA-NEL240A-xxx for 18.5" ~ 32" TPM( USB/RS232, I<sup>2</sup>C I/F )



Dimension : 135 x 45mm

# WinXP, Win7, Android Control Board

NLPCA-LEN150-xxx for 7" ~ 15" TPM( USB, I<sup>2</sup>C I/F )

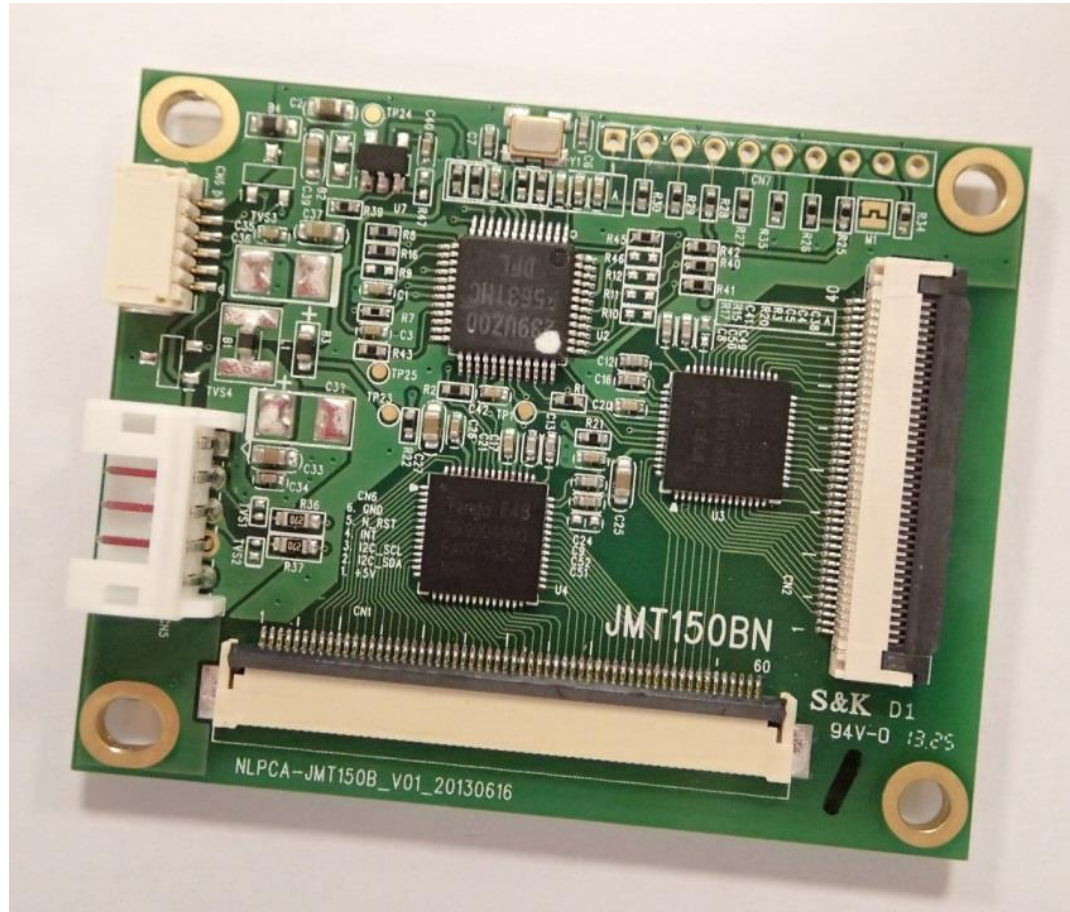


Dimension : 53.51 x 42.3mm



# WinXP, Win7, Android Control Board

NLPCA-LEN150B-xxx for 7" ~ 15" TPM( USB, I<sup>2</sup>C I/F )

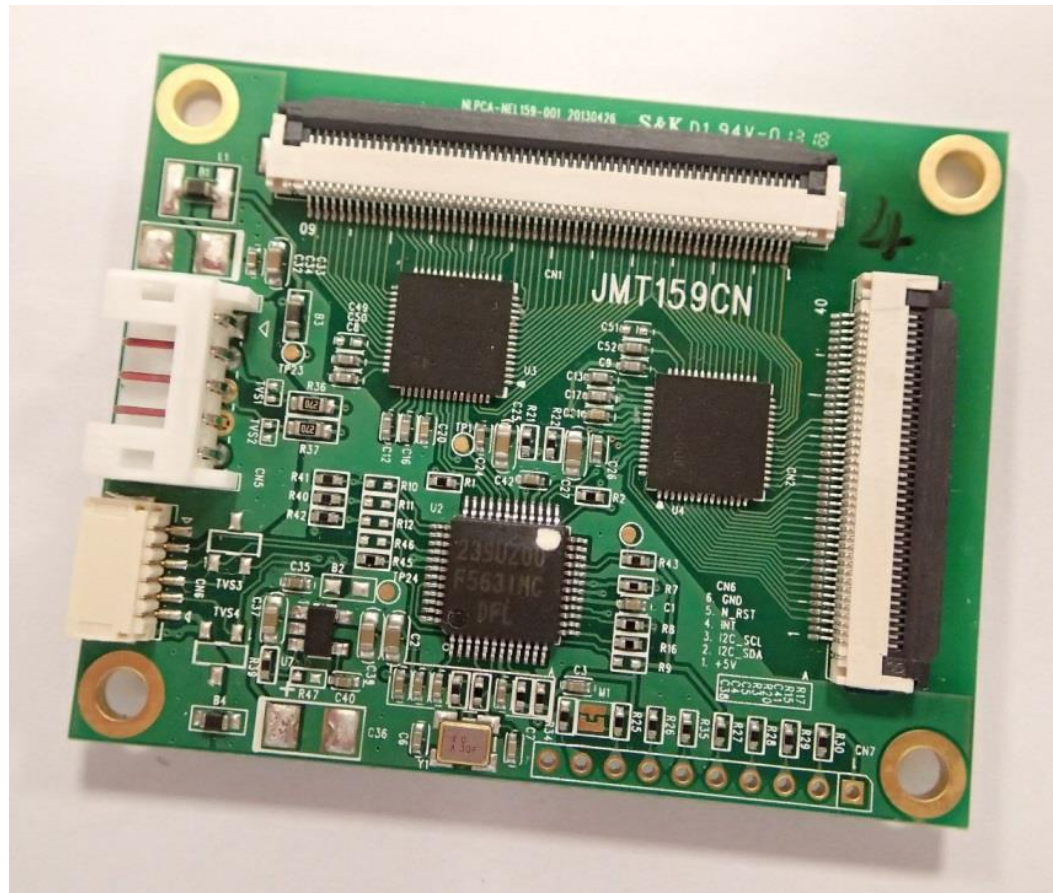


Dimension : 53.51 x 42.3mm



# WinXP, Win7, Android Control Board

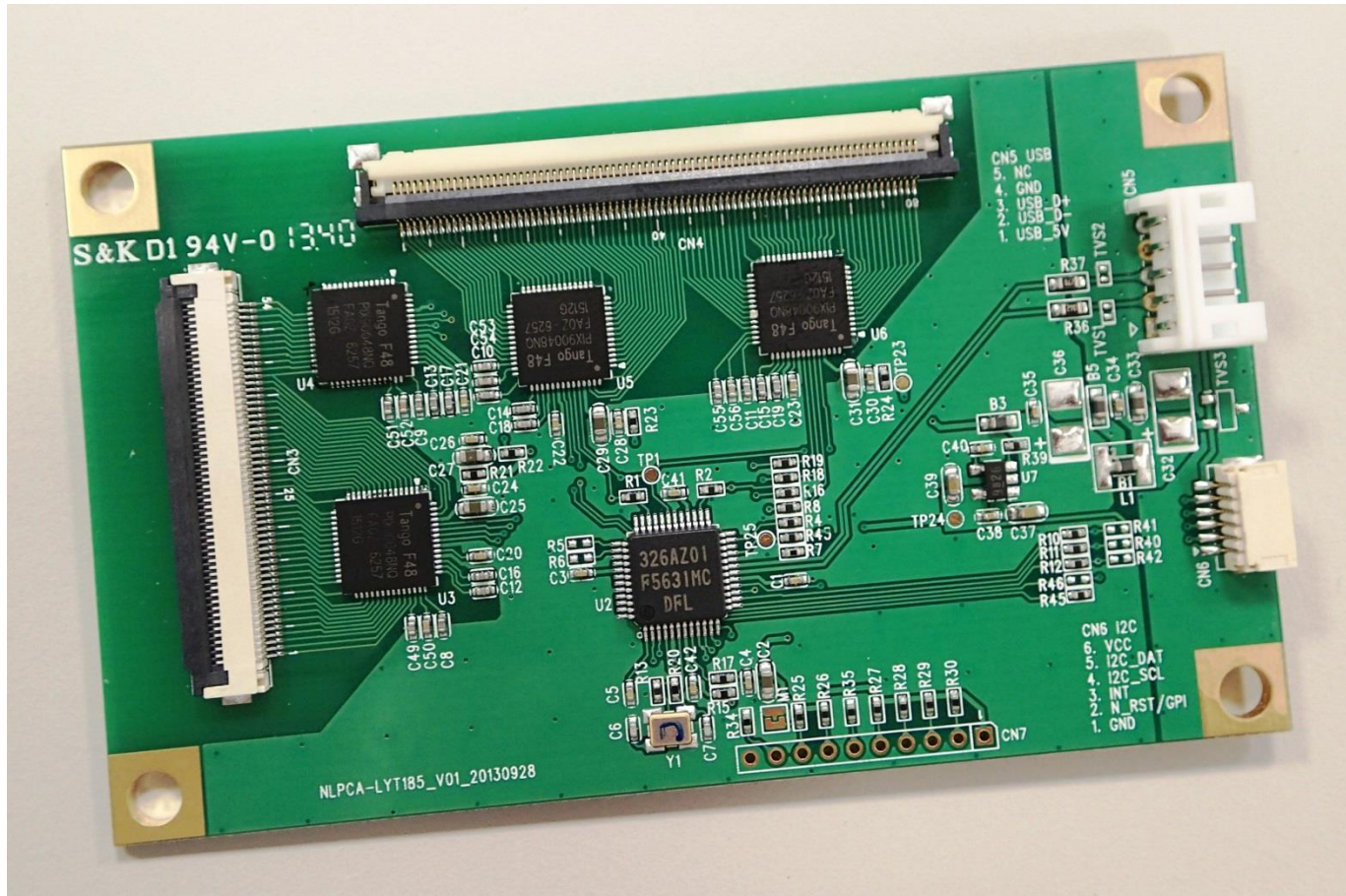
NLPCA-LEN150B-xxx for 7" ~ 15.9" TPM(16:3) ( USB, I<sup>2</sup>C I/F )



Dimension : 53.51 x 42.3mm

# WinXP, Win7, Android Control Board

NLPCA-LEN185-xxx for 15" ~ 27" TPM( USB, I<sup>2</sup>C I/F )



Dimension : 90 x 44.6mm

**NEOLEC**

**Neolec International Inc.**